



## Heene Road, Worthing



£950

- VIEWINGS BETWEEN 12:00 - 13:30 8TH OF JUNE 2024.
- ONE BEDROOM PURPOSE FLAT
- BALCONY
- DOUBLE BEDROOM
- DOUBLE GLAZING
- MODERN FITTED KITCHEN
- FITTED WARDROBE
- DUAL ASPECT LOUNGE
- LIFT SERVICE

**\*\* VIEWINGS FULLY BOOKED \*\*** Robert Luff & Co are delighted to offer this apartment. Modern comfort meets elegant living in this spacious one bedroom flat. The inviting dual-aspect lounge is bathed in natural light, boasting two balconies that seamlessly blend indoor and outdoor living. The bedroom features convenient built-in wardrobes, offering ample storage space. A sleek and well-equipped modern kitchen, complete with high-quality appliances, adds a touch of luxury to daily routines. Situated just moments away from the stunning beach and the vibrant local amenities on Rowlands Road, this flat in Airedale Court presents an exceptional opportunity to enjoy a contemporary lifestyle in a desirable location.

VIEWINGS BETWEEN 12:00 - 13:30 8TH OF JUNE 2024.

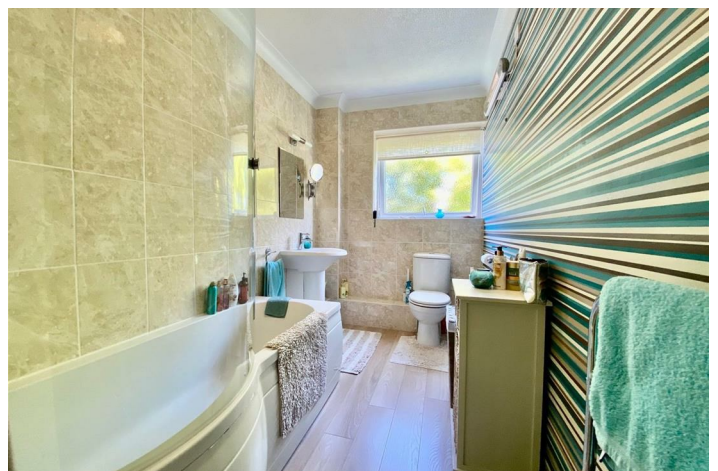
T: 01903 331247 E: [info@robertluff.co.uk](mailto:info@robertluff.co.uk)  
[www.robertluff.co.uk](http://www.robertluff.co.uk)

**Robert  
Luff & Co**  
 Sales | Lettings | Commercial





## Accommodation



30 Guildbourne Centre, Worthing, West Sussex, BN11 1LZ  
T: 01903 331247 E: [info@robertluff.co.uk](mailto:info@robertluff.co.uk)  
[www.robertluff.co.uk](http://www.robertluff.co.uk)



The information provided about this property does not constitute or form any part of an offer or contract, nor may it be regarded as representations. All interested parties must verify accuracy and your solicitor must verify tenure/lease information, fixtures and fittings and, where the property has been extended/converted, planning/building regulation consents. All dimensions are approximate and quoted for guidance only as are floor plans which are not to scale and their accuracy cannot be confirmed. References to appliances and/or services does not imply that they are necessarily in working order or fit for the purpose.